

CWT*- WATER TURBINE METER

Multi jet, dry dial, direct reading. Diameters 15 to 50 mm (1/2" ÷2"). Risks of corrosion and sedimentation free. Antimagnetic protection upon request. Long durability and elevated precision guaranteed. MID R100-H 2004/22/CE,

Direct reading on 5 numeric protected rolls (6 numeric protected rolls on DN40 and DN50). Operating pressure PN16 UNI DIN2401.

Inductive pre-equipment for the installation of non-magnetic pulse output, data communication modules M-BUS wired and wireless OMS.

Basic models

05LTURCWTF* = cold water Version 0°C-50°C

R100-H ↑ R50-VH→

05LTURCWTC* = hot water version 30°C-90°C

R100-H ↑ R50-VH→

On request: cold water version 0°C-50°C

R160-H ↑ R50-VH→



AF

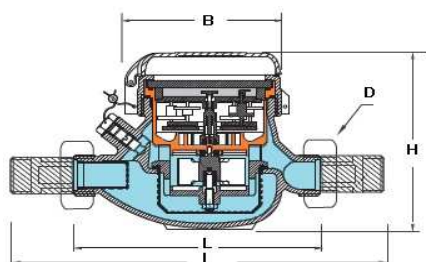


AC

DESCRIPTIONS

Size	DN15 1/2"	DN20 3/4"	DN25 1"	DN32 1 1/4"	DN40 1 1/2"	DN50 2"
Permanent flow rate m ³ /h Q3	2,5	4	6,3	10	16	25
Overload Flow Rate m ³ /h Q4	3,125	5	7,875	12,5	20	31,25
Sensibility Lt/h	6	6	10	10	20	20
Transitional Flow Rate Lt/h Q2	40	64	100,8	160	256	400
Min Flow Rate Lt/h Q1	25	40	63	100	160	250
Min reading l	0.05	0.05	0.05	0.05	0.05	0.05
Max reading m ³	99.999	99.999	99.999	99.999	999.999	999.999
Pulse output /Liter	1-10-100-1000					
L mm	145-165-190	190	260	260	300	300
l mm	225-245-270	290	360	380	440	460
B mm	100	100	104	104	126	160
H mm	109	111	117	117	153	172
D Threading EN ISO 228 1:2000	3/4"	1"	1 1/4"	1 1/2"	2"	2 1/2"
Weight kg	1,18 / 1,41	1.40	2.09	2.18	4,38	4,46 - 9,40*

* The DN50 meters can be supplied flanged according to ISO 7005-2 / EN 1092-2 PN16



Installazione

Installation



SATEMA

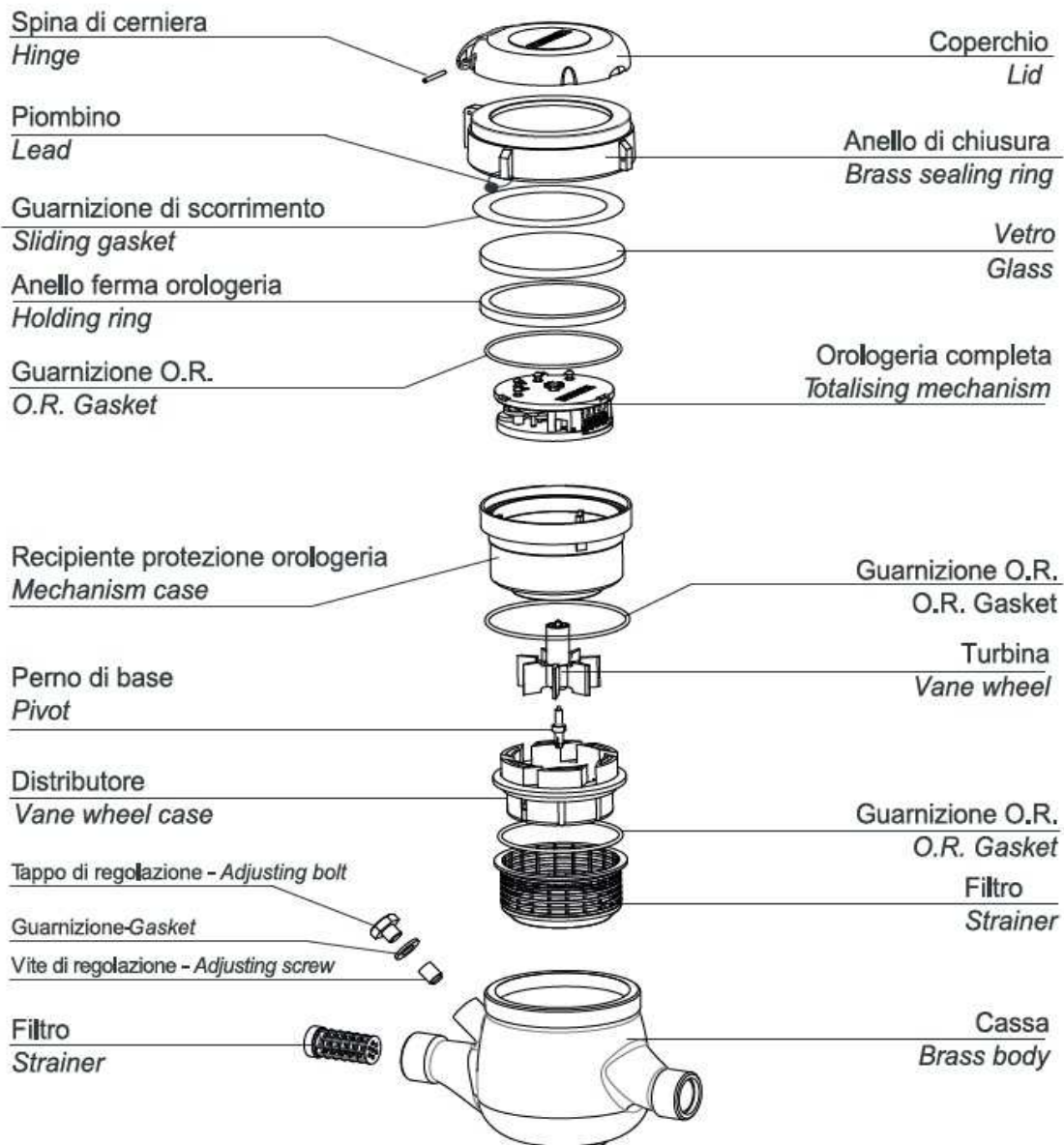
13856 VIGLIANO B.SE - Via Milano, 395

Tel. +39 015811102 - Fax 0158853029

Mail: info@satema.it

<http://www.satema.it>

CWT*- WATER TURBINE METER



SATEMA

13856 VIGLIANO B.SE - Via Milano, 395
 Tel. +39 015811102 - Fax 0158853029
 Mail: info@satema.it <http://www.satema.it>

CWTM-PL3 ELECTRONIC PULSE EMITTER MODULE



Cable length: 1,5 m 4 conductors
 Output signal: Supply: max 30VDC (100mA) Type: open-collector, Polarized
 Minimum pulse value: 1 liter
 Battery: Non-replaceable lithium, maximum battery life 10 years*
 Protection: IP68, maximum 24 hours of continuous submersion at 1 m depth.
 Weight: 120 g
 Dimensions mm, lxpH: 88x70x25
 Working temperature: 1 - 55°C
 Module Configuration: Android device (smartphone, tablet, etc) with NFC interface

Cable 4 wires legenda:

White:	regular count wire, NO contact (Normally Open). The contact closes every time the pulse is sent, independently from the water flow direction,
Yellow:	tampering wire, NC contact (Normally Closed). The contact opens when one (or more) of the following events occurs:
	- Module removal
	- Fraud on the inductive sensor
	- Cable cut
Green:	programmable wire, NO contact (Normally Open). The user can set one of the following functions:
	- Absolute counting (closes when the pulse is sent, with backward flow revolution compensation);
	- Backward counting (closes when the pulse is sent, when the flow goes backwards);
	- Dosing (closes every "x" liters, with "x" freely programmable),
Brown:	Ground (common wire)

SATEMA

13856 VIGLIANO B.SE - Via Milano, 395
 Tel. +39 015811102 - Fax 0158853029
 Mail: info@satema.it <http://www.satema.it>