

## MISDA - MASS FLOW METERS FOR COMPRESSED AIR

The measurement of the flow of the compressed air takes place according to the calorimetric principle, by detecting a volumetric flow of the fluid normalized regardless of its temperature and pressure. A digital display 4-digit alphanumeric LED can be called a lot of information directly in the field: the peak consumption, instantaneous consumption, and totalizer function. The thresholds or set alarm can be programmed and recalled easily by push button. For further processing of the signal outputs are available for switching, analog and pulse outputs.

### Applications

- optimization of compressed air consumption
- amount of consumption in the production processes
- leakage monitoring

## DESCRIPTION

### OPERATION PRINCIPLE

In the air flow there are two platinum sensors, one of which detects the reference temperature of the air and the other is heated to the same level of heat as a function of its withdrawal made by the fluid flowing. The current measured is proportional to the media velocity and so to the heat energy spending. Microprocessor technology calculates the data and displays result on accordance with DIN / ISO 2533 (1013 hPa, 15 ° C, 0% RH).

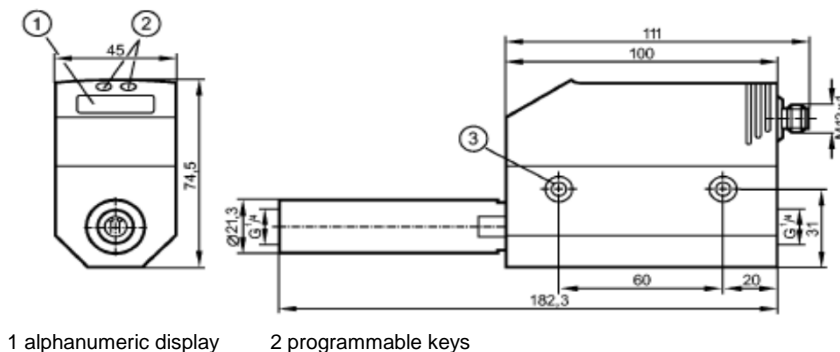


## TECHNICAL FEATURES

Flow rate	DN 08	DN 15	DN 25	DN 40	DN 50
Nm3/h	0.1...15	0.25...75.0	0.75...225.0	1.3...410.0	2.3...700.0
NI/min	1.67...250	4...1250	12.5...3750	22.2...6830	39...11670
Flow rate	DN 80	DN 100	DN 150	DN 200	
Nm3/h	9...2750	15...4400	33...10000	58...17500	

Fluid temperature:	0...60°C
Max pressure:	16 bar
Max gas wet :	up to 90% RH
Response time:	< 0,1 s
Power supply:	19...30V dc
Accuracy:	+/- 3%
Output:	1 X analog 4...20 mA (max 500Ohm), 1X pulse output (pulse/volume)
Repeatability:	+/- 1% m.v.
Class protection:	IP65 /III
Body material:	PBT-GF20, PC, makrolon, V2A (1.4301), Viton
Sensor material:	V2A (1.4301), Ceramics, Peek, Polyester
Accessories:	M12 plug female, m. 2 or m. 5 cable

DN 08



1 alphanumeric display      2 programmable keys



**SATEMA**

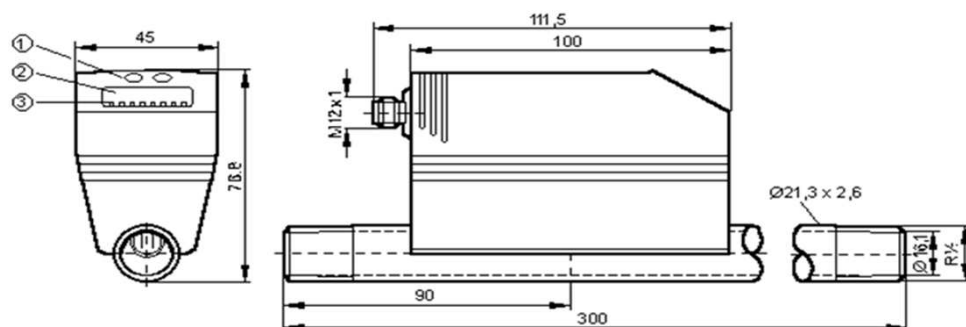
13856 VIGLIANO B.SE - Via Milano, 395

Tel. +39 015811102 - Fax 0158853029

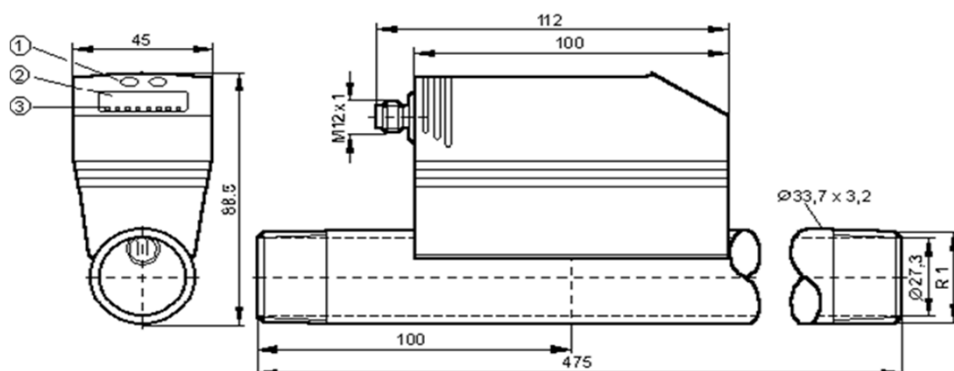
Mail: [info@satema.it](mailto:info@satema.it)      <http://www.satema.it>

## DIMENSIONAL DRAWINGS

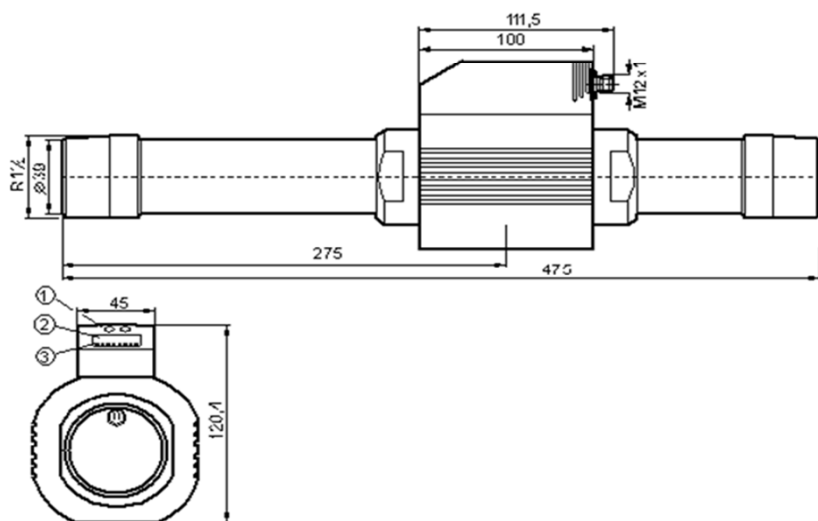
DN 15



DN 25



DN 40



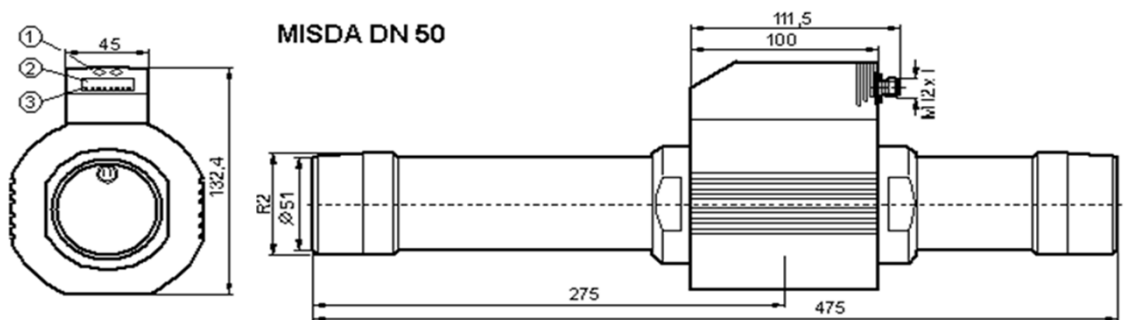
**SATEMA**

13856 VIGLIANO B.SE - Via Milano, 395

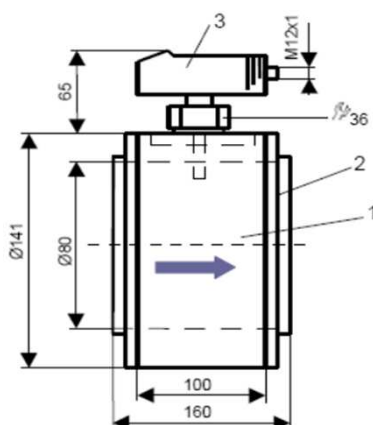
Tel. +39 015811102 - Fax 0158853029

Mail: [info@satema.it](mailto:info@satema.it) <http://www.satema.it>

## DIMENSIONAL DRAWINGS



DN 80

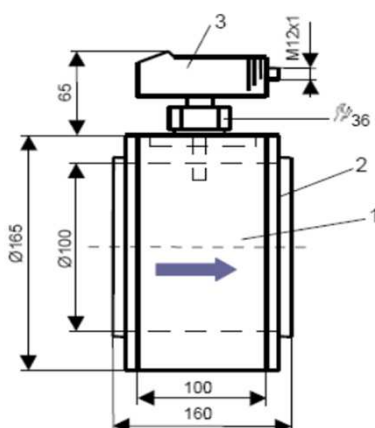


1: Cilindro, 2: briglie a saldare (DIN 2633), 3: Sensori



CE

DN100



1: Cilindro, 2: briglie a saldare (DIN 2633), 3: Sensori



CE



**SATEMA**

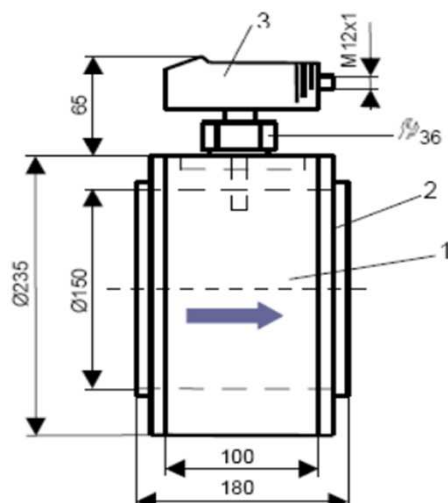
13856 VIGLIANO B.SE - Via Milano, 395

Tel. +39 015811102 - Fax 0158853029

Mail: [info@satema.it](mailto:info@satema.it) <http://www.satema.it>

## DIMENSIONAL DRAWINGS

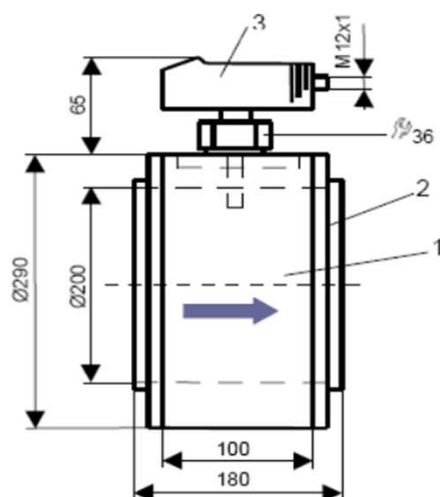
DN 150



1: Cilindro, 2: briglie a saldare (DIN 2633), 3 : Sensori



DN 200



1: Cilindro, 2: briglie a saldare (DIN 2633), 3 : Sensori



**SATEMA**

13856 VIGLIANO B.SE - Via Milano, 395

Tel. +39 015811102 - Fax 0158853029

Mail: [info@satema.it](mailto:info@satema.it) <http://www.satema.it>