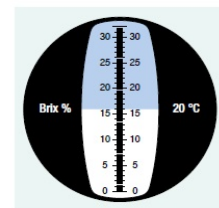


RF* - REFRACTOMETERS

Optical and digital refractometers, portable or bench instruments, of excellent quality, for regular production and field inspections in several industries so as food firms. All models are supplied ready to use with calibration kit and padded case.

OPTICALS



SUGAR OPTICAL REFRACTOMETER

The model most widely employed, for all quality controls in food business, where you need to check the sugar concentration in fruit juices, syrups, wort, milk, soft drinks. Suitable also for lubricants and emulsified oils controls.

Models		LED lighted cover	Brix Range	Accuracy
RFO101	-	No	0-32%	+/- 0.2%
RFO101ATC	with temperature compensation	Yes (Option)	0-32%	+/- 0.2%
RFO102	-	No	28-62%	+/- 0.2%
RFO103	-	Yes (Option)	0-80%	+/- 0.5%

HONEY OPTICAL REFRACTOMETER

RFO104 three scales: Sugar - Water - ° Beaumè. Cover without lighting

% sugar	58-92%	+/- 0.5%	% water	12-27%	+/- 1%	Beaumè	38-43°Bè	+/- 0.5°Bè
---------	--------	----------	---------	--------	--------	--------	----------	------------

WORT OPTICAL REFRACTOMETER

Double scale for measuring sugar concentration in the wort. Temperature compensation. Optional version with lid lighted LED

RFO107ATC	Brix	0-35%	accuracy +/- 0.2%	Babo	0-28	accuracy +/- 0.2
-----------	------	-------	-------------------	------	------	------------------

SALINITY OPTICAL REFRACTOMETER

For the measurement of the salt concentration in to water, referred to the sodium chloride. Calibration available related to other salt types. Cover without lighting.

Models		Range	Accuracy
RFO106	-	0-28% salt	+/- 0.2%
RFO106ATC	Double scale and temperature compensation	Salt 0-100 ‰ Spec. weight 1,000-1,070	+/- 1 ‰ +/- 0.001

CLINICAL OPTICAL REFRACTOMETER

Measure the protein concentration, the specific gravity of the urine (Specific Gravity) and the refractive index (nD). Just a few drops of blood serum or plasma, urine or albumin are needed for the analysis.

RFO105 Three scale: Serum - specific gravity Urine - Refractive index nD.

Parameter	Range	Accuracy
Serum/Albumin	0-12g/dL	+/- 0.2g/dL
Urine specific gravity	1.000-1.050SG	+/- 0.002 SG
Refractive index	1.3330-1.3600 nD	+/- 0.0005 nD

ANTIFREEZE AND BATTERIES CHECKING OPTICAL REFRACTOMETER

It allows to know the freezing point of mixtures of propylene glycol and ethylene glycol. It can also be used to check the efficiency of the electrolytic solution of the batteries.

RFO414ATC temperature compensation, cover without lighting

Parameter	Range	Accuracy	Parameter	Range	Accuracy
Ethylene glycol	-50...0 °C	1°C	Cleaner	-40...0 °C	5°C
Propylene Glycol	-50...0 °C	1°C	Electrolytic solution	1.10...1.40sg	0.01 sg



SATEMA

13856 VIGLIANO B.SE - Via Milano, 395

Tel. +39 015811102 - 015510156 Fax 0158853029

Mail: info@satema.it <http://www.satema.it>

RF - REFRACTOMETERS

ABBE BENCH OPTICAL REFRACTOMETER

Prism thermostatable benchtop refractometer with digital thermometer, prism calibration and transport case.

Parameter	Range	Accuracy
Refractive index nD	1.3000-1.7000	+/- 0.0002
% Brix	0.0-95.0 %	+/- 0.25%



DIGITALS



Digital reading refractometers series, perfect in laboratory and production. Simple to use, just a drop of sample on the prism to read the display showing the concentration. Also suitable with turbid or colored samples.

RFDBR refractometers are bench instruments that can be easily moved where needed, thanks to their easy handling. The cell sample holder, stainless steel, is suitable for any liquid, ensuring a good cleaning and a prolonged use of the instrument.

Automatic temperature compensation of the refractive index due to a built-in microprocessor.

CAL key for automatic point calibration by standard water sample.

Scroll display of the different parameters. On their LCD display you can read the Brix% degrees for the sugar concentration, refractive index nD, salinity (Salt RFDBR) and temperature °C of the sample. IP66.

Range	RFDBR35	RFDBR45	RFDBR SALT	RFDBR95
% Brix	0.0...35.0	0.0...45.0	0.0...35.0	0.0...95.0
Brix division	0.1			
Accuracy	+/- 0.2%			+/- 0.5%
nD	1.3333...1.3900	1.3333...1.4098	1.3333...1.3900	1.3330...1.5400
nD division	0.0001			
Accuracy	+/- 0.0005			+/- 0.0003
% Salinity	-	-	0.0...28.0	-
Salinity division	-	-	0.1	-
Accuracy	-	-	+/- 0.2	-
Temperature °C	0.0...40.0			
°C division	0.1			
Accuracy	+/- 0.5°C			+/- 1°C
Response time	2 seconds			1 second
Sample	1 ml. Minimum			
Calibration	with water			
Supply	2x AAA batteries			1 x 9V battery
Dimension/Weight	135x65x70 180 g			185x100x66 225 g



SATEMA

13856 VIGLIANO B.SE - Via Milano, 395

Tel. +39 015811102 - 015510156 Fax 0158853029

Mail: info@satema.it <http://www.satema.it>

RF - REFRACTOMETER

Primary Standards certificates by Paragon Scientific Ltd of sucrose solution with high calibration accuracy for all types of Abbe, digital, portable refractometers.

These standards are UKAS certified according to ISO / IEC 17025.

The standard are products 1st and 3rd week of each month.

The stability of these standards, without preservatives, is guaranteed for 6 weeks from the date of production.

Certified value % Brix +/- 0,02% at 20°C	Refractive index nD	Package
0.00	1.33299	1x 15 ml
5.00	1.34026	1x 15 ml
10.00	1.34782	1x 15 ml
15.00	1.35568	1x 15 ml
20.00	1.36384	1x 15 ml
25.00	1.37233	1x 15 ml
30.00	1.38115	1x 15 ml
35.00	1.39032	1x 15 ml
40.00	1.39986	1x 15 ml
50.00	1.42009	1x 15 ml
60.00	1.44193	1x 15 ml



Kit	Package (1x15 ml for value)
1	0.00% + 5.00%
2	0.00% + 10.00%
3	0.00% + 15.00%
4	0.00% + 20.00%
5	0.00% + 25.00%
6	0.00% + 30.00%
7	0.00% + 35.00%
8	0.00% + 40.00%
9	0.00% + 50.00%
10	0.00% + 60.00%
35	2 flacons 0.00% + 5.00% + 10.00% + 25.00% + 35.00%
60	2 flacons 0.00% + 15.00% + 40.00% + 50.00% + 60.00%



SATEMA

13856 VIGLIANO B.SE - Via Milano, 395

Tel. +39 015811102 - 015510156 Fax 0158853029

Mail: info@satema.it <http://www.satema.it>