

PPC - PANEL OPERATOR AND TOUCH SCREEN PLC

Touch screen panel operator with integrated PLC for process control and for interfacing to a supervisory system. 12Mb memory. 128 independent timers available to the user program, resolution 10 ms. Ability to handle up to three PLC simultaneously. Software PID control and ON / OFF functions "soft start" and "Self-tuning" to acquire the control parameters. "Data logger" with saving variables PLC on USB mass storage. Protection function of the recordings "Secure Datalog". Ability to full control the panel system (monitors and HMI screens) by PC via LAN connection.

"DataLogger" functional characteristics

Sampling rate of analog inputs: max 500 samples per second.

Recording speed on mass storage: 1 sample per second for each variable.

Display of variables acquired on monitors in real time and in graphic form.

Stored variables on mass storage via USB; using a hub, you can enter up to four mass storage media.

The recording time is limited only to the size of the mass storage device connected.

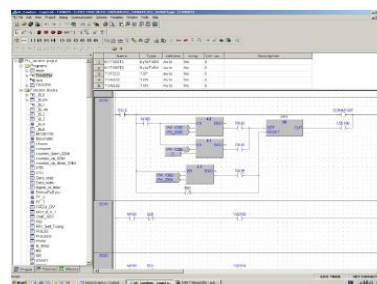
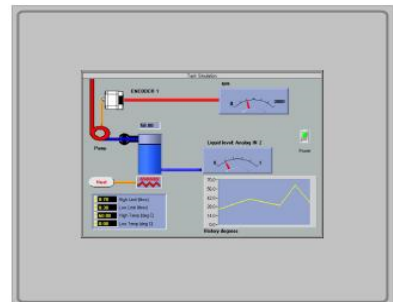
The acquired data of each variable are: dd / mm / yyyy - hh / mm / ss - variable name - data detected.

The files stored on mass storage is a text and easily exportable to XLS format. Customizing the name of the variables.

Start / Stop recording can be managed directly from the controller or by the operator interface.

Secure Datalog (21 CFR PART 11 Regulations)

The Secure Data Log enables the acquisition and registration of a storage mass, via USB connection, all events and / or variables defined by the programmer ensuring durability and protection of acquired values. The acquired data is encrypted with standard encryption algorithms with 128-bit symmetric key and protected by an additional password. The storage medium contains only encrypted records, one for each variable to be captured. The recorded data are available in text format that can be imported in XLS permission to perform the decryption. The decryption is done only by knowing both the encryption key and the password protection. Key and password are set by the user and may be valid for the single recording session / decryption or more sessions depending on security degree required. The software module for decryption is available, on request, also for PC with Windows operating system, if data decryption can be not carried on board.



TECHNICAL SPECIFICATIONS

| | |
|-----------------------|--|
| Monitor: | 320x240 TFT LCD with 256-color touch screen function |
| Output: | 1 x RS485, 1 x CanBus, 1 x USB 1.0, 1 x LAN Ethernet |
| System: | Linux kernel Soft PLC (IEC 61131-3 standard languages) |
| Front dimensions mm.: | HxWxD 140x 200x65 |
| Panel cutout HxD mm: | 120x190 |
| Work temperature: | 0...50°C |
| Front protection: | IP65 |
| Thermal stability: | 50 ppm/°C |



SATEMA

13856 VIGLIANO B.SE - Via Milano, 395

Tel. +39 015811102 - 015510156 - Fax 0158853029

Mail: info@satema.it <http://www.satema.it>

PPC - PANEL OPERATOR PLC - I/O MODULES

Description:
 PNP Input:
 PNP Output:
 Maximum output current 1:
 Max current on all outputs:
 Power supply:
 Dimensions WxHxD mm:
 Operating temperature:
 Protection degree:

| DIGITAL I/O MODULES | | |
|---------------------|-------|--------|
| IN | OUT | IN/OUT |
| 16 | - | 8 |
| - | 16 | 8 |
| - | 500mA | 500mA |
| - | 2A | 2A |
| 24Vdc +/-15%, 3W | | |
| 115x115x22,5 | | |
| 0...50°C | | |
| IP20 | | |

Description:
 Input:

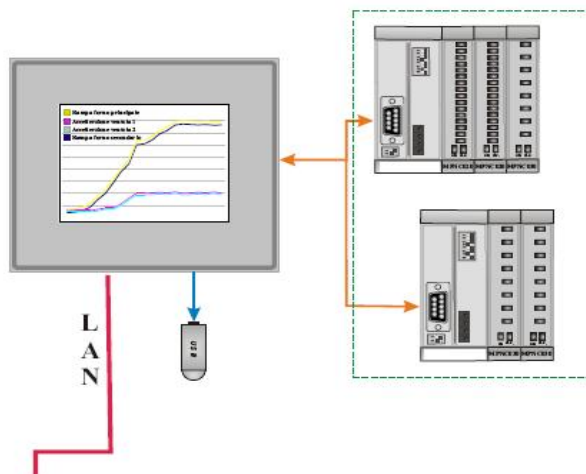
| ANALOG I/O MODULES | | | | |
|--------------------------------------|---------------|--------------|-------------|---------------------|
| IN | IN | IN | IN | OUT |
| 4 x (J, K, T, RTD100, 4-20mA, 0-10V) | 8 x (J, K, T) | 8 x (4-20mA) | 8 x (0-10V) | - |
| - | - | - | - | 4 x (4-20mA, 0-10V) |

I/O Accuracy:
 Thermal stability:
 Power supply:
 Dimensions WxHxD mm:
 Operating temperature:
 Protection:

| | | | | |
|------------------|--|--|--|--|
| 0.5% | | | | |
| 50 ppm/°C | | | | |
| 24Vdc +/-15%, 3W | | | | |
| 115x115x22,5 | | | | |
| 0...50°C | | | | |
| IP20 | | | | |

CANopen interface: CanOpen protocol

| | | | | | | | |
|---|----------|----------|-------------|-----------|-------------|---------------|------------|
| Process mode: | | Setup: | max IN/OUT: | Cable: | N. PDOs: | Max Baudrate: | |
| synchron, cyclic, event driven, polling | | from PLC | 1024 | shielded | 16 Tx 16 Rx | 1 Mbit/sec | |
| Cable length: | 5 km | 2.5 km | 1 km | 500 m | 250 m | 100 m | 40 m |
| Data Transfer | 10 kbaud | 20 kbaud | 50 kbaud | 125 kbaud | 250 kbaud | 500 kbaud | 1000 kbaud |



SATEMA

13856 VIGLIANO B.SE - Via Milano, 395
 Tel. +39 015811102 - 015510156 - Fax 0158853029
 Mail: info@satema.it <http://www.satema.it>