

STEAMIX* - STAINLESS STEEL STEAM / WATER MIXER

Steamix provides a low instantaneous pressure hot water source using the available steam as supply of cold water. The mixer incorporates a safety device that ensures the immediate interception of the direct steam due to accidental shut-off in the cold water inlet. The water temperature of the mixed output is easily controlled by the water and steam valves connected to the respective inputs. BSPP Male threaded ending connections.



Pecularity

- Safety device for steam stop
- check valves including
- Entirely in stainless steel body
- Noise operation

TECHNICAL SPECIFICATIONS

- Steam pressure: min 2,5 bar, max 10 bar
 The steam pressure should be equal to or not greater than 3 times the water
 The water pressure should be not higher than the steam
- Process connections: 3/4" and 1" BSPP male threaded
- Installation: vertical wall mounting
- Options: Direct steam valve (e.g. sterilization)
- Accessories: -Lifting bracket stainless steel -Steam / water valves
 -Adjustable gun -Hot water / steam rubber tube
 -Stainless steel tube suspension bracket

STEAMIX20 Flowrate l / h hot water output							
Steam Pressure	Temperature hot water outlet						
	40°C	50°C	60°C	70°C	80°C	90°C	95°C
bar							
2,5	1900	1400	1150	900	700	650	600
3	2250	1600	1230	1030	900	800	700
4	2700	2000	1550	1250	1000	850	800
5	3250	2300	1800	1500	1250	900	850
6	3900	2900	2250	1800	1500	1200	1100
7	4200	3100	2400	1950	1600	1300	1200
8	4800	3500	2700	2100	1800	1550	1280
9	5200	3900	3000	2450	2000	1700	1600
10	5900	4100	3250	2700	2250	1900	1750

STEAMIX25 - Flowrate l / h hot water output							
Steam pressure	Temperature hot water outlet						
	40°C	50°C	60°C	70°C	80°C	90°C	95°C
bar							
2,5	2400	1750	1400	1150	950	800	750
3	2800	2150	1700	1400	1150	950	900
4	3400	2500	2000	1650	1350	1150	1100
5	4050	3050	2400	1950	1550	1300	1200
6	4750	3650	2800	2250	1800	1500	1400
7	5400	4000	3150	2500	2050	1700	1550
8	5900	4400	3400	2750	2250	1900	1750
9	6500	4750	3750	3050	2500	2150	1950
10	7050	5150	4050	3300	2750	2300	2150



SATEMA

13856 VIGLIANO B.SE - Via Milano, 395

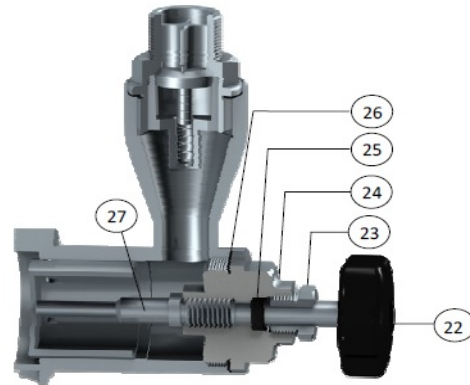
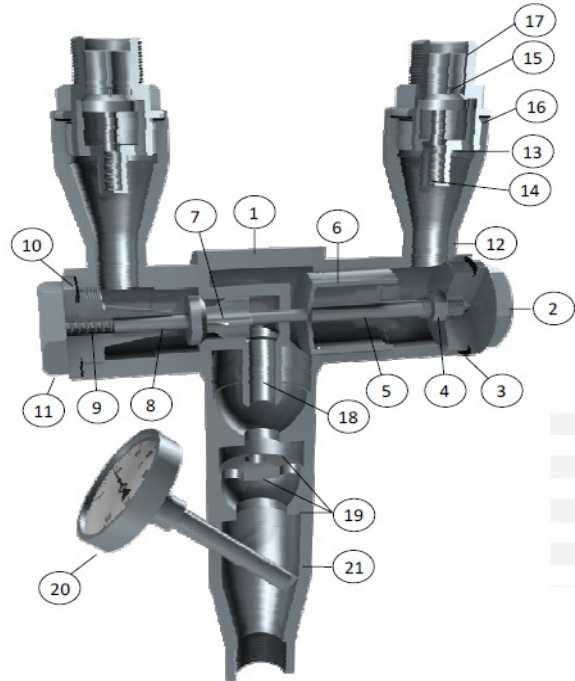
Tel. +39 015811102

Mail: info@satema.it

<http://www.satema.it>

TECHNICAL SPECIFICATIONS

Item	Q.ty	Component	Material
1	1	Body	S.S.316
2	1	Bonnet (water)	S.S.316
3	1	Gasket (water)	PTFE
4	1	Nut	S.S.316
5	1	Spacer	S.S.316
6	1	Water drawer	S.S.316
7	1	Steam shaft	S.S.316
8	1	Steam drawer	S.S.316
9	1	Steam spring	S.S.302
10	1	Steam gasket	PTFE
11	1	Steam bonnet	S.S.316
12	2	Check body	S.S.316
13	2	Crotch	S.S.316
14	2	Check spring	S.S.302
15	1	Check valve	S.S.316
16	1	Check gasket	PTFE
17	2	Check bonnet	S.S.316
18	1	Steam nozzle	S.S.316
19	3	Rings	S.S.316
20	1	Termometer	Stainless steel
21	1	Diffuser	S.S.316
22	1	Lobe handwheel	Rubber
23	1	Packing Gland	S.S.316
24	1	Bonnet steam opening	S.S.316
25	1	Gland gasket	PTFE
26	1	Water gasket	PTFE
27	1	Steam Opening auction	S.S.316



SATEMA

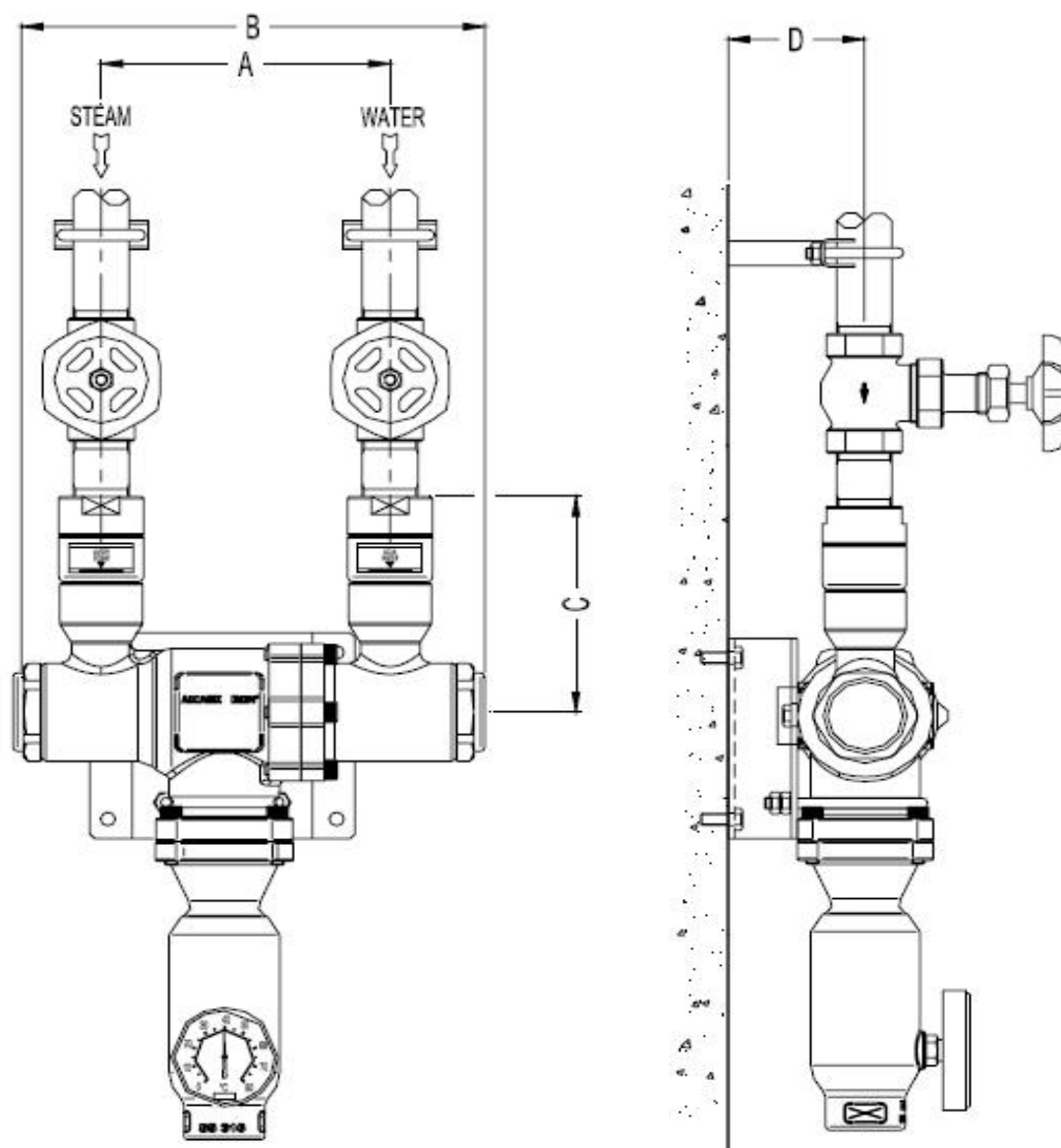
13856 VIGLIANO B.SE - Via Milano, 395

Tel. +39 015811102

Mail: info@satema.it

<http://www.satema.it>

DIMENSIONS



Dimensions mm							Weight
	A	B	C	D	L	L2	Kg
STEAMIX20	137	202	120	36	319	120	4.5
STEAMIX25	137	202	120	36	329	120	5.0



SATEMA

13856 VIGLIANO B.SE - Via Milano, 395

Tel. +39 015811102

Mail: info@satema.it

<http://www.satema.it>

STEAMIX* - STEAM GUN S.S. 316

Low-pressure gun with jet cone beam adjustable by the lever. Adjusting screw for varying cone amplitude from 0° to 60°. High-impact plastic covered, shells with 3 soft rubber rings, stain-resistant and watertight. Plastic lever with hand protection. Internally wetted parts in SS 316 stainless steel. Connection with swivel joint. Flow factor 60 l / min Max

Nominal Pressure: 24 bar - 2,4 MPa - 350 psi
 Nominal Flow: 60 l/min - 16 USGpm
 Nominal Temperature: 90°C - 195°F
 Material: SS316 stainless steel
 Shell color: Blue



STEAMIX* - RUBBER HOSE STEAM

Under coat: Black, smooth, EPDM rubber, resistant to saturated steam
 Reinforcement: Steel wire inserts
 Cover: Black / red, smooth microperforated (wrapped finish), EPDM rubber
 Working Temperature: -40 +210°C
 Fittings: Male 1/2 " + swivel Female 1/2" stainless steel AISI316

Nominal Diameter	Inner Diameter	Outer Diameter	Working Pressure bar	Burst Pressure bar	Weight for meter
13	13 - 1/2"	25	18	180	0,49



SATEMA

13856 VIGLIANO B.SE - Via Milano, 395

Tel. +39 015811102

Mail: info@satema.it

<http://www.satema.it>