

## MTAL - TURBINE METERS

Turbine flow meter for small and medium flow rates of liquids or gases, with Hall effect pulse sensor. Installation with vertical or horizontal flow, while maintaining a straight pipe equal to 5 DN upstream and downstream of the meter.



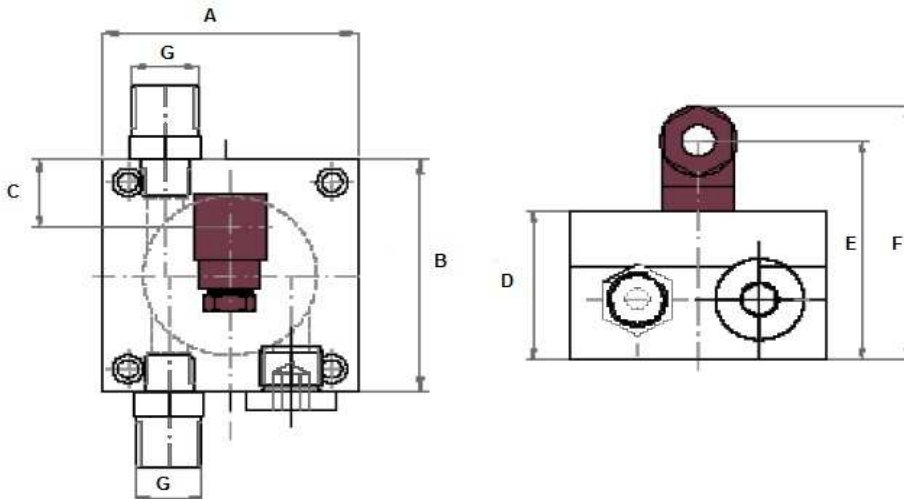
In two constructive sizes respectively with connections 1/4" or 3/8" and 3/8" or 1/2"

Versions: PMMA Body, PVC/brass or S.S. 304 process connections;  
S.S. 304 body and process connections

Process connections	Flow rate l/m	PMMA body		S.S. 304 body
		Connections		Connections
		PVC/Brass	S.S.304	S.S.304
1/4" - 3/8"	0.3-3	MTALP1P1	MTALP1X1	MTALX1X1
	0.5-5	MTALP1P2	MTALP1X2	MTALX1X2
	0.8-8	MTALP1P3	MTALP1X3	MTALX1X3
	1.0-10	MTALP1P4	MTALP1X4	MTALX1X4
3/8" - 1/2"	2.5-25	MTALP2P1	MTALP2X1	MTALX2X1
	3.5-35	MTALP2P2	MTALP2X2	MTALX2X2
	4.0-40	MTALP2P3	MTALP2X3	MTALX2X3

## TECHNICAL SPECIFICATIONS

Working pressure: 10 bar max  
 Working temperature: -20...70°C  
 Construction materials: PMMA - Moplen or stainless steel AISI 304  
 Process connections: BSP male  
 Output: NPN open collector max 20 mA  
 Power supply: 5Vdc - 24Vdc



G	A	B	C	D	E	F
1/4" - 3/8"	50	50	14.5	30	61	68
3/8" - 1/2"	60	60	14.5	30	61	68



**SATEMA**

13856 VIGLIANO B.SE - Via Milano, 395  
 Tel. +39 015811102 - Fax 0158853029  
 Mail: [info@satema.it](mailto:info@satema.it) <http://www.satema.it>