

MIPO - OSCILLATING PISTON VOLUMETRIC FLOW METER

Suitable for acids, chemicals, fuel, demineralized water, oils, soda, hypochlorite, brines, solvents. Food products such as fat, molasses, melted chocolate, honey, butter, resins etc.

- Measures precise and highly repetitive (better than 0.2%)
- Recommended use for installations of dosing predetermination
- Control flow rate and totalized instant
- Horizontal or vertical mounting with upward flow
- Knocker hydrostatic min. 0.1 / 0.2 mt
- Maximum viscosity 3000 cps



Note

Install a filter upstream with filtration less than 0.1 mm to avoid damage to the instrument.

Avoid the formation of air or gas within the measuring chambers.

DESCRIPTIONS

The liquid continuously through the measuring chamber causes an oscillatory movement of the piston contained in it. Are inserted in the piston of the permanent magnets. The Reed sensor placed outside the meter detects the movement of the piston and sends to the reading systems of the pulses that are totalized and processed.

TECHNICAL SPECIFICATIONS

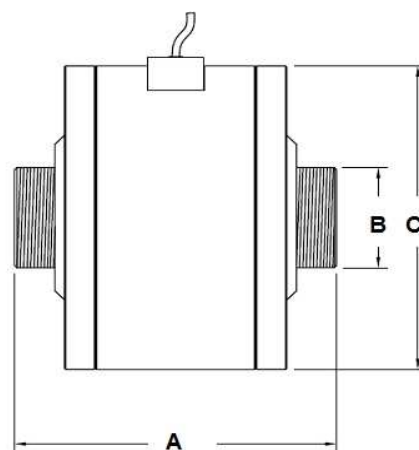
	1/2"	1"	1 1/2"	2"	3"
Models:					
Flow rate liters/hours:	30...400	200...2200	400...6000	500...9000	800...20000
cc pulses	8.5	50	220	500	500 (2reed)
Max Temperature:	316 S.S.=80°C; PVDF=60°C; PP=45°C; PVC=35°C				
Max Pressure:	316 S.S. = 10 bar; PVDF, PP, PVC = 3,5 bar				
Body:	316S.S., PVC, PP, PVDF				
Piston:	T=PTFE, A=Aluminium, V=PVC, K=PEEK				
O-ring:	Viton, PTFE, EPDM, Nitrile				
Hydraulic connections:	std threaded GAS M, options Flanged UNI, Wafer, Clamp - DIN				
Sensors:	Reed, inductive Reed Hall effect with LED indication				

OPTIONS

- With heating or cooling jackets
- ATEX version II 2GD c T4 X
- High pressure

316SS Gas M	A	B	Diameter C	Weight
MIPOS15G	85	1/2" Gas	58	1
MIPOS25G	126	1" Gas	95	4.55
MIPOS40G	146	1 1/2" Gas	149	10.15
MIPOS50G	164	2" Gas	200	17.80
MIPOS80G	199	3" Gas	248	27.7
PVC PVDF PP Gas M	A	B	Diameter C	Weight
MIPO*15G	85	1/2" Gas	58	0.29
MIPO*25G	128	1" Gas	95	0.84
MIPO*40G	146	1 1/2" Gas	145	2.03
MIPO*50G	164	2" Gas	200	3.97
MIPO*80G	199	3" Gas	248	7.33

* V= body PVC; P= body PP, F= body PVDF



SATEMA

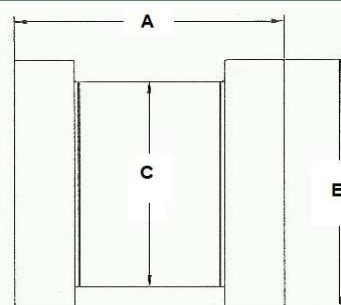
13856 VIGLIANO B.SE - Via Milano, 395

Tel. +39 015811102 - Fax 0158853029

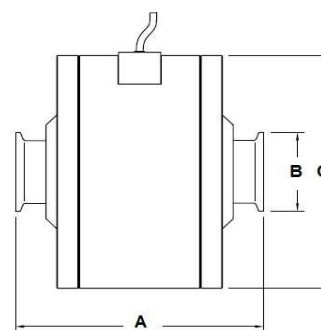
Mail: info@satema.it <http://www.satema.it>

TECHNICAL SPECIFICATIONS

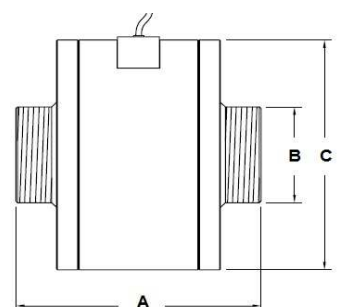
316SS Wafer	A	B	Diameter C	Weight
MIPOS15W	90	95	58	2.7
MIPOS25W	115	115	95	6.6
MIPOS40W	125	150	149	15.85
MIPOS50W	143	165	200	22.9
MIPOS80W	168	200	248	34.7



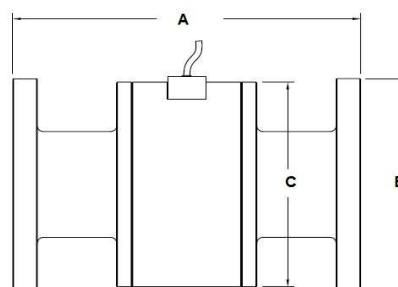
316SS Clamp	A	Diameter B	Diameter C	Weight
MIPOS15C	109	25	58	1
MIPOS25C	126	50.5	95	3.75
MIPOS40C	146	50.5	149	10
MIPOS50C	164	64	200	17.1
MIPOS80C	199	91	248	27.85



316SS DIN11851	A	B	Diameter C	Weight
MIPOS15D	85	RD 34 x 1/6"	58	1.07
MIPOS25D	126	RD 52 x 1/6"	95	3.80
MIPOS40D	146	RD 62 x 1/6"	149	10.30
MIPOS50D	164	RD 78 x 1/6"	200	18.02
MIPOS80D	199	RD110 x 1/6"	248	28



PVC flanged	A	Diameter B	Diameter C	Weight
MIPOV15F	160	95	58	0.31
MIPOV25F	177	115	95	1.36
MIPOV40F	228	150	145	3.18
MIPOV50F	260	165	200	5.09
MIPOV80F	273	200	248	7.5



SATEMA

13856 VIGLIANO B.SE - Via Milano, 395

Tel. +39 015811102 - Fax 0158853029

Mail: info@satema.it <http://www.satema.it>