

CWW WOLTMANN WATER METERS WITH PULSE OUT

Horizontal Woltmann with removable insert. Dry dial with magnetic transmission, sealed mechanism with direct reading on numbered rolls. 360° adjustable ring. Used in industry and irrigation. Pre-equipped for impulse emitter device (applicable even after installation). First quality materials resistant to corrosion. The meter is equipped with a pulse output emitter (REED contact).

The water meters equipped with pulse emitter device can be linked to tele-reading systems, to PLC, to M-Bus networks (through PADPULSE signal converters), to impulse counters and to all those applications that need an electronic input which indicates the water consumption.

REED contacts are contained in a very resistant box in order to avoid false signals caused by humidity or other external factors. High attraction strength among REED contacts is very high. For this reason the possibility of false signals or multiple signals is reduced to minimum. The reed contacts commutation time is a few milliseconds; this fact allows the pulse emitter device to be used for high flowrates also.

Flanges standard UNI2223PN16

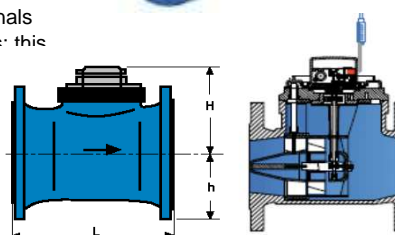
Max working pressure 16 bar

Models: CWW cold water temperature 0... 30°C

CWWH hot water temperature 0...90°C

Class H = B

Class V = A

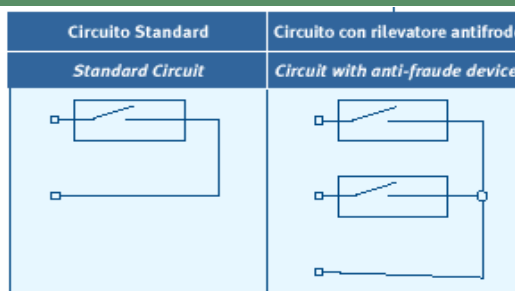


FEATURES

Size DN		50	65	80	100	125	150	200	
Max flow rate mc/h		30	50	80	120	200	300	500	
Nominal flow rate mc/h		15	25	40	60	100	150	250	
Transitional flowrate mc/h		3	5	8	12	20	30	50	
Min flow rate mc/h		0,45	0,75	1,2	1,8	3	4,5	7,5	
Max reading dial mc		9.999.999						99.999.999	
Min reading dial L		2						20	
Pulse values liters A		100						1000	
	B	1000						10000	
Dimensions mm.									
L	mm.	200	200	225	250	250	300	350	
H	mm.	125	126	172	172	172	172	201	
h	mm.	75	83	95	105	120	135	160	
Weights	kg.	12,5	14	15	18	20	31,5	46	

REED SPECIFICATIONS

Max Voltage	24V
Min Voltage	0,02V
Max interrupted Current	0,5A
Max bearable Current	1,2A
Max Power	10W/VA
Cable lenght	3 mt.



A - B Reed position

could be installed the pulse emitter device later on.)



SATEMA

13856 VIGLIANO B.SE - Via Milano, 395

Tel. +39 015811102 - Fax 0158853029

Mail: info@satema.it <http://www.satema.it>