

ACB 15 PORTABLE BIOGAS ANALYZER

Portable Analyzer for biogas. Analyze methane (CH₄), carbon dioxide (CO₂), carbon monoxide (CO) and oxygen (O₂) in landfill gas, biogas, etc. measuring ranges 0-100% by volume for CH₄, 0-100% by volume for CO₂, 0-20000 ppm for CO, 0-25% by volume for O₂

Electrochemical oxygen sensor, in alkaline material insensitive to carbon dioxide. The lifetime of the sensor varies depending on the percentage of oxygen measured (about 2 years with 20.93% of O₂, 4/5 years with O₂ percentages lower than 5% and with clean gas and dehumidified

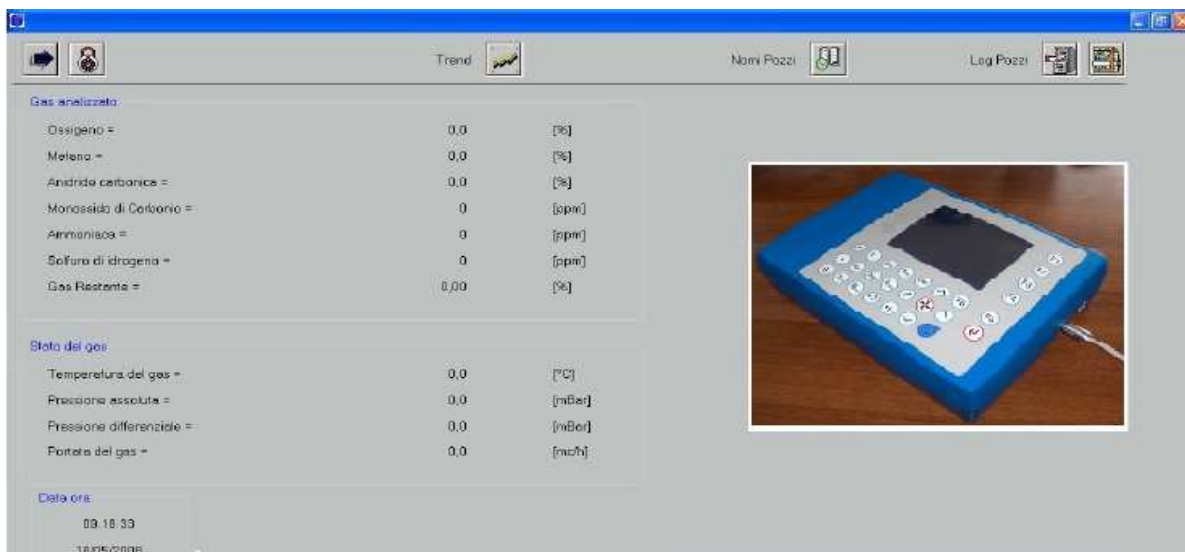
Methane sensors, carbon dioxide, carbon monoxide, are low-temperature infrared. Methane, carbon dioxide and carbon monoxide have a high coefficient of absorption of infrared light, the sensor reads this attenuation when within the measuring Chamber the gas in question, the extent of mitigation is possible to obtain the concentration of the gas

The software allows reading and configuration of the operating parameters of the equipment, displays readings stored with pits beds.

The Analyzer has 2 standard RS232 serial port the first (main gate) is galvanically isolated. This isolation allows you to connect to external devices that may appear with different potential. On this port is connected to a supervisory system that can be installed on personal computers. The software is designed for Windows 2000 or XP, with '.net'.

Plastic Housing padded for transport and the protection of the instrument, has a window made of transparent material to be able to view the data without the need to open the case itself.

The Analyzer is equipped with a set of next generation batteries lithium ion battery presentanoil, simply does not have memory effect and have a high capacity in relation to dimensionedelle same weight. The battery capacity is enough to guarantee a functioning about 10 hours of the instrument before the need for a new refill. To recharge the batteries just connect the power cord to the network, the data transmission cable to the instrument and press the red button. The Chargers need a time of about 2 hours for a full charge. The tool performs the battery status and displays continuously the battery completely discharged, warns the operator (who can save the work done at the time) using the buzzer and a Flash of the videos and then automatically turns off
Memory up to 800 different names of the measurement sites, with size of your choice, up to 12 characters and 2349 readings.



SATEMA

13856 VIGLIANO B.SE - Via Milano, 395

Tel. +39 015811102 - Fax 0158853029

Mail: info@satema.it <http://www.satema.it>

ACB 15 TECHNICAL SPECIFICATIONS

Display: Backlit LCD 1/4 VGA 320x240 pixels, simultaneous display of all measures
 Keyboard: membrane, alphanumeric more special functions
 Protection: watertight, allows analysis outside in the presence of water splashing
 Temperature: operative -5...+50°C
 Weight: 1.5 kg
 Dimensions: 293x213x73 mm

Measuring Range:	range	Resolution
O ₂	0...25% Vol	+/- 1%
CH ₄	0...100% Vol	+/- 1.5%
CO ₂	0...100% Vol	+/- 1.5%
CO	0...20000 ppm	+/- 1.5%
Absolute Pressure	100...1200 mBar	+/- 2%
Differential Pressure:	-200...0 mBar	+/- 2%
Temperature Sensor:	-10...100°C	0.5°C
Flow Sensor:	0...1000 cm ³ /min	20 cm ³ /min
Flow Range:	0...200 cm ³ /min	
Pump suction:	Pressure/vacuum range +100...-550 mbar	

OPTIONS:

- Thermal flow sensor, allows the visualization of the value of the biogas flow. Ability to set threshold values for alarm in case of insufficient flow.
- H₂S Sensor, 0...300 ppm
- NH₃ Sensor, 0...1000 ppm



SATEMA

13856 VIGLIANO B.SE - Via Milano, 395

Tel. +39 015811102 - Fax 0158853029

Mail: info@satema.it <http://www.satema.it>